

# Vertikal

# guide

# INTERMAT

for buyers and users of lifting equipment

Pour les acheteurs et utilisateurs  
d'équipements de levage



[www.vertikal.net](http://www.vertikal.net)

Cranes

Telehandlers

Aerial Lifts

Grues

Chariots

Télescopiques

Nacelles

**2015**



# Hybrid Technology

**nifty**  
Innovations

**Niftylift's** revolutionary **Hybrid** power pack delivers intelligent, efficient and environmentally conscious performance.

- 50% Lower Fuel Consumption
- EU Stage IIIB Compliant
- Catalytic Converter & Particulate Filter
- Fast Mains-Free Battery Re-Gen
- Zero Emission Electric-Only Mode

**Electric-Only Mode** - a 'zero emission' power option that allows you to work inside or out, cleanly and quietly.

**Hybrid Mode** - utilises an efficient (Tier 4 / EU Stage IIIB compliant) engine to reduce fuel consumption by up to 50% and an advanced purification system to greatly reduce exhaust emissions. Surplus engine power is stored in the battery pack and when extra 'grunt' is required the electric motor automatically assists to boost performance. 'Diesel Re-Gen' charges the batteries up to twice as fast as standard mains.



USE SMART PHONE Q R CODE READER

To learn more about Nifty **Hybrid** Technology, please visit our website.

To arrange a demo, please call us now on:

**+44 (0)1908 223456**



**niftylift.com**

**Editors:**

Mark Darwin  
Ed Darwin  
Rüdiger Kopf  
Alexander Ochs

**Advertising & Sales:**

Karlheinz Kopp  
Pam Penny  
Clare Engelke

**Production:**

Nicole Engesser  
Leigh W. Sparrow

**Publisher:**

Leigh W. Sparrow

**The Vertikal Press Ltd:**

PO box 6998 Brackley  
NN13 5WY, UK  
Tel: +44(0)8448 155900  
Fax: +44(0)1295 768223  
E-mail: info@vertikal.net  
Web: www.vertikal.net

**Vertikal Verlag:**

Sundgaulle 15, D-79114,  
Freiburg, Germany  
Tel: +49 761 8978660  
Fax: +49 761 8866814  
E-mail: info@vertikal.net

**Design & Artwork by:**

bp design  
Tel: +44 (0) 208 245 5715  
E-mail: studio@bpdesign.info

**Vertikal**  
.net

**cranes & access** **Vertikal days**

**KRAN & BÜHNE**

**IABS**  
TAG DER ARBEITSBÜHNESEKURITÄT

facebook

twitter

# Intermat back on the map



It's spring and we are in Paris, with everyone hoping that 2015 will also be a time of growth for the French and continental European economies. As far as Intermat goes it looks like being a great exhibition in spite of predictions of its demise as an international show. Several companies, such as Manitou, are back after missing an Intermat or two. On the other hand one or two regulars such as JCB are missing this year, but there is still plenty to see when it comes to Cranes, Telehandlers and Aerial Work Platforms. In fact there will be more truly new product launches at this show than in the last two Intermats combined, putting it firmly back on the international trade show map.

This year has also seen many lifting exhibitors moving their stands to new areas, making this guide more useful than ever. The guide will help direct you around the lifting equipment exhibits in the most efficient manner, highlighting key products to look out for. And as usual we have listed every crane, telehandler and access exhibitor by brand and company, along with associated products and services. Coupled with large maps, this should make finding all products of interest a breeze. Don't forget the guide to Paris at the back and more importantly make the most of your visit.

Do stop and see the Vertikal team, we are between outside areas Ext.5 and Ext.6.

Have a great week.

**Leigh W Sparrow**

## Intermat est de retour

C'est le printemps et nous sommes à Paris; chacun espérant que l'année 2015 apportera aussi le printemps dans les économies tant françaises qu'européennes. En ce qui concerne Intermat, il semble que cela sera une grande exposition, malgré les prédictions de sa disparition en tant qu'exposition internationale.

Plusieurs constructeurs, tels que Manitou, sont de retour après une absence d'un ou deux Intermat. D'un autre côté, certains habitués, tels que JCB n'exposent pas cette année; il y a cependant beaucoup de choses à voir en ce qui concerne les grues, chariots télescopiques et plateformes pour le travail aérien.

En fait il y aura plus de présentations de réelles nouveautés que lors des deux précédentes expositions réunies, replaçant définitivement Intermat sur le calendrier des expositions internationales.

Cette année, plusieurs exposants de matériel de levage ont déplacé leur stand dans de nouvelles zones, rendant le guide plus utile que jamais. Cela vous aidera, de manière très efficace, à vous diriger parmi les présentations d'équipements de levage, soulignant les produits clés à ne pas manquer.

Et, comme d'habitude, nous avons établi la liste de chaque grue, chariot télescopique et plateforme par marque et constructeur, comprenant également les produits et services associés. Accompagné de grandes cartes, l'ensemble permettra une recherche rapide des produits qui vous intéressent.

N'oubliez pas le guide de Paris à la fin de la revue et, ce qui est le plus important, profitez pleinement de votre visite.

N'hésitez pas à venir nous voir, nous sommes entre les zones extérieures Ext.5 et Ext.6.

Passez une bonne semaine.

**Leigh W Sparrow**



AT THE VERY  
**TOP.**  
AT THE FORE-  
**FRONT.**



**TOP PERFORMANCE WITHOUT COMPROMISE.**

The premium quality and high capacity, the durable components and outstanding workmanship, the global service security, and the stability and strengths of the company make PALFINGER a reliable partner.

**PALFINGER**

LIFETIME EXCELLENCE

[WWW.PALFINGER.COM](http://WWW.PALFINGER.COM)





3	Introduction
6	Intermat overall map
8	Outside zone Ext 5 & Hall 5b
10	Outside zone Ext 6
13	Exhibitor list
17	Mobile cranes
19	Crawler cranes
21	Tower cranes
23	Loader cranes
24	Pre-start inspections
27	Self-propelled booms
29	Mast booms
31	Spider and trailer lifts
33	Scissor lifts
35	Truck/van mounted lifts
39	Telehandlers
43	Electronics, safety & remote controls
45	Components
47	Paris guide

3	Introduction
6	Plan d'Intermat
8	Zone Extérieure Ext 5/Halle 5b
10	Zone Extérieure Ext 6
13	Liste exposants
17	Grues mobiles
19	Grues sur chenilles
21	Grues à tour
23	Grues de chargement
25	Inspections pre-travail
27	Nacelles automotrices
29	Nacelles á mât
31	Nacelles araignées/remorquables
33	Nacelles ciseaux
37	Nacelles sur camion
41	Chariots télescopiques
43	Electroniques/commandes à distance
45	Composants
47	Guide de Paris





# GLOBAL SOLUTIONS FOR YOUR BUSINESS



## ADVICE

EXPERT TEAM  
LOCAL SUPPORT WORLDWIDE

## FINANCE

LEASING SOLUTIONS  
FINANCE SOLUTIONS

## SERVICES\*

SPECIALIST TECHNICAL ASSISTANCE  
MAINTENANCE & WARRANTY  
PROFESSIONAL TRAINING  
SPARE PARTS

**E5 KEY**

- ACCESS/NACELLE
- CRANES/GRUES
- TELEHANDLERS
- COMPONENTS/ELECTRONICS

HALL 5b

MANITOU

JLG

BOBCAT

**Vertikal**  
cranes & access  
KLAN&BUHNE  
Vertikal days

ORGANISERS OFFICE

TOILET

TOILET

TERRASSE

TERRASSE

PALFINGER

HMF

AVANT LEGUAN

TEUPEN

CSF

FARESSIN

FRANCE ELEVATEUR

KNOOP

MTS

FASSI

MAGNI

EVERDIGM

RUTHMANN

TRANSMANUT

APPYORO

COMILEV

MERLO

MERLO

THWAITES

BÖCKER

WACKER NEUSON

GENIE

THYSSENKRUP

RSP

TEREX

RIVARD

ACREDS

AGS

DIECI

IPAF

SOCAGE

DUMA

HINOWA

TECHNOG

ATLAS

HOLLAND LIFT

TIGIEFFE AIRO

SKYJACK

KLAAS CHASTAGNER

ELS MAKINE

HAULOTTE

SOLLASE SOBLINTER

MULTITEL PAGLIERO

TIME ISOLI

ATN

DINGLI

PLATFORM BASKET

MOBA

CUMMINS

CHASI

UNIC GGR

DEVAREM

MECALAC

TOILET

E5



# REACHING NEW HEIGHTS



Terex works for you – taking you and your business higher with Terex® cranes and Genie® aerial work platforms.

When it comes to lifting, our reliable and versatile products together with our responsive customer support deliver the best solutions for your business success.

Contact us to learn how we can help you reach new heights:  
[www.terex.com/cranes](http://www.terex.com/cranes) and [www.genielift.com](http://www.genielift.com)



**TEREX®**

**Genie®**  
A TEREX BRAND

# Zone Exterieur 6

# Outside Area 6





**TEUPEN**<sup>®</sup>  
...access redefined

**True  
Performance**

**LEO 24GT**



24 m working height

**LEO 21GT**



21 m working height

**Teamed Up!**

**Both models share:**

- 12 m unrestricted outreach
- Full 250 kg basket load
- Multi-position stabiliser system
- Dual power with electric drive + petrol or optionally Diesel or battery
- Hydraulic height- & width adjustable tracks

[www.TEUPEN.com](http://www.teupen.com)



**PERFORMANCE III S**  
**LIGHTLIFT**  
17.75 | 20.10 | 26.14

Visit us on our stand: Outside area E5G015

20 - 25 Avril 2015  
Paris-Nord Villepinte - France

**INTERMAT**  
Paris



**TRACKED AERIAL  
PLATFORMS**

- 8 models from 14 to 26 m height
- Easy and reliable controls
- Fast boom operations
- 230 kgs unrestricted capacity
- IIS self-stabilization and remote assistance



HINOWA S.p.A.

[www.hinowa.com](http://www.hinowa.com) - [info@hinowa.com](mailto:info@hinowa.com)

Via Fontana • 37054 Nogara • Verona • ITALY

Tel. +39 0442.539100 • Fax +39 0442.539075

**Hinowa**<sup>®</sup>



STAND	
<b>Self-Propelled Booms - Nacelles Automotrices</b>	
Airo	Ext 5 G 012
ATN	Ext 5 J 009
Avant Tecno	Ext 5 B 010
Dingli	Ext 5 J 015
ELS Makine	Ext 5 H 013
Genie	Ext 5 E 010
Haulotte	Ext 5 H 004
Imer Access	7 H 116
JLG	5b F 041
Leguan	Ext 5 B 010
Manitou	5b F 015
Merlo	Ext 5 E 003
Platform Basket	Ext 5 J 017
Skyjack	Ext 5 H 015
<b>Mast Booms - Nacelles à Mât</b>	
Airo	Ext 5 G 012
ATN	Ext 5 J 009
Dingli	Ext 5 J 015
Genie	Ext 5 E 010
Haulotte	Ext 5 H 004
Imer Access	7 H 116
JLG	5b F 041
Manitou	5b F 015
Toucan	5b F 041
<b>Push Around Lifts - Nacelles Manuelles</b>	
Airo	Ext 5 G 012
Dingli	Ext 5 J 015
ELS Makine	Ext 5 H 013
Genie	Ext 5 E 010
Haulotte	Ext 5 H 004
Imer Access	7 H 116
JLG	5b F 041
<b>Scissor Lifts - Nacelles Ciseaux</b>	
Airo	Ext 5 G 012
ATN	Ext 5 J 009
Avant Tecno	Ext 5 B 010
Dingli	Ext 5 J 015
ELS Makine	Ext 5 H 013
Genie	Ext 5 E 010
Haulotte	Ext 5 H 004
Imer Access	7 H 116
Iteco	7 H 116
JLG	5b F 041
Leguan	Ext 5 B 010
Manitou	5b F 015
Merlo	Ext 5 E 003
Skyjack	Ext 5 H 015
<b>Trailer lifts - Nacelles sur remorque</b>	
Böcker	Ext 5 E 019
Genie	Ext 5 E 010
Haulotte	Ext 5 H 004
JLG	5b F 041
Teupen	Ext 5 B 014
<b>Spider Lifts - Nacelles Araignée</b>	
Airo	Ext 5 G 012
ATN	Ext 5 J 009
Avant Tecno	Ext 5 B 010
CO.ME.T.	Hall 7 J 087

STAND	
Cormidi	5a B 063
CTE	Ext 5 C 013
Hinowa	Ext 5 G 015
Ihimer	7 F 113
Imer Access	7 H 116
JLG	5b F 041
Multitel Pagliero	Ext 5 H 016
Platform Basket	Ext 5 J 017
Socage	Ext 5 G 009
Teupen	Ext 5 B 014
<b>Truck and van mounts - Nacelles sur camion/fourgon</b>	
Böcker	Ext 5 E 019
Chastagner	Ext 5 H 011
CO.ME.T.	Hall 7 J 087
Comilev	Ext 5 C 022
CTE	Ext 5 C 013
ELS Makine	Ext 5 H 013
France Elevateur	Ext 5 C 013
Imer Access	7 H 116
Isoli	Ext 5 J 021
Multitel Pagliero	Ext 5 H 016
Palfinger Platforms	Ext 5 B 004
Ruthmann	Ext 5 C 016
Socage	Ext 5 G 009
Teupen	Ext 5 B 014
Time France	Ext 5 J 021
Versalift	Ext 5 J 021
<b>Mastclimbers &amp; Hoists - Acenseurs de chantier</b>	
Dingli	Ext 5 J 015
Geda	7 L 126
Maber	7 K 135
Mait	Ext 2 F 028
Raxtar	7 H 001
Scanmaskin	Ext 7 A 006
Stros	7 K 116
<b>Crawler Cranes - Grues sur chenilles</b>	
Cifa	7 H 001
Hitachi Sumitomo	6 L 046
Kobelco Cranes	Ext 6 D 059
Kranlyft	Ext 6 E 056
Liebherr	Ext 6 E 035
Maeda	Ext 6 E 056
R&B cranes	Ext 5 C 013
Sennebogen	Ext 6 D 060
Terex Cranes	Ext 5 E 010
Unic Cranes Europe	Ext 5 J 016
Zoomlion	7 H 001
<b>All Terrain Cranes - Grues tout-terrain</b>	
Liebherr	Ext 6 E 035
Locatelli	Ext 6 D 056
Terex Cranes	Ext 5 E 010
Zoomlion	7 H 001
<b>Truck Mounted Cranes - Grue sur camion</b>	
Böcker	Ext 5 E 019
Chastagner	Ext 5 H 011
Klaas	Ext 5 H 011
Liebherr	Ext 6 E 035

STAND	
Sennebogen	Ext 6 D 060
Terex Cranes	Ext 5 E 010
Zoomlion	7 H 001
<b>Rough Terrain Cranes - Grue RT</b>	
Locatelli	Ext 6 D 056
Terex Cranes	Ext 5 E 010
Zoomlion	7 H 001
<b>Spider Cranes - Grue Araignée</b>	
Cormidi	5a B 063
GGR	Ext 5 J 016
Kranlyft	Ext 6 E 056
Maeda	Ext 6 E 056
R&B cranes	Ext 5 C 013
Unic	Ext 5 J 016
<b>Tower Cranes - Grues à tour</b>	
Everdigm	Ext 5 C 010
Liebherr	Ext 6 E 035
Matebat	Ext 6 C 055
Potain	Ext 6 C 055
Terex Cranes	Ext 5 E 010
Zoomlion	7 H 001
<b>Foundation Cranes - Grues fondations</b>	
Bauer	Ext 2 E 002
Casagrande	Ext 2 F 053
Mait	E2 F 028
PVE	Ext 2 F 037
Soilmec	5b C 042
<b>Loader Cranes - Grues de chargement</b>	
Appydro	Ext 5 D 017
Atlas	Ext 5 G 004
Effer	Ext 5 D 017
Fassi	Ext 5 C 007
HMF	Ext 5 B 005
Marchesi	Ext 5 D 017
Marrel	Ext 7 D 002
Maxilift	7 L 116
Next Hydraulics	7 L 116
<b>Trailer cranes - Grue sur remorque</b>	
Böcker	Ext 5 E 019
Chastagner	Ext 5 H 011
Klaas	Ext 5 H 011
<b>Telehandlers - Chariots télescopique</b>	
Ausa	Ext 6 A 047
Bobcat	5b J 027
Dieci	Ext 5 G 003
Doosan	5b J 027
Faresin	Ext 5 C 009
Genie	Ext 5 E 010
Haulotte	Ext 5 H 004
JLG	5b F 041
Liebherr	Ext 6 E 035
Magni	E5 C 04
Manitou	5b F 015
Merlo	Ext 5 E 003
Sennebogen	Ext 6 D 060
Skyjack	Ext 5 H 015
Sunward	6 J 153
Terex	Ext 5 E 010
Wacker Neuson	Ext 5 E 004

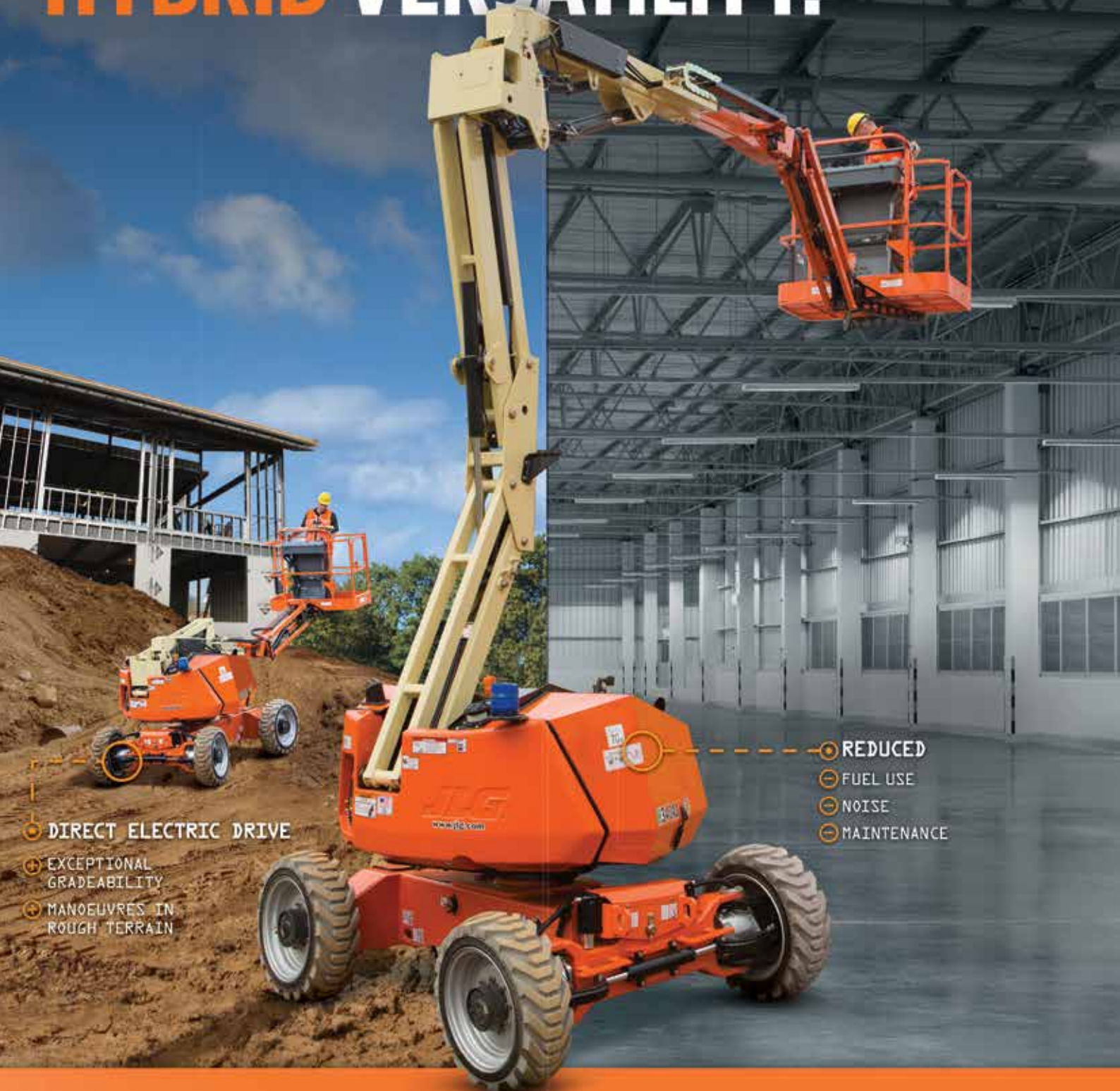
STAND	
<b>Scaffold and towers - Echafaudage</b>	
Altrad	7 J 103
Mills	7 J 077
Plettac	7 J 103
Qingdao Scaffolding	7 K 071
<b>Transport trailers - Remorques</b>	
Berroyer	5a B 133
Faymonville	Ext 5a 003
Goldhofer	Ext 6 G 044
Maxicargo	E6 A 022
Nicolas	Ext 6 C 029
Nooteboom	Ext 6 E 046
Remorques Hubiere	5a E 123
Remorques Louault	5a B 123
Scheuerle	Ext 6 C 029
<b>Remote Controls - Commandes à distance</b>	
Akerstroms	5a K 099
Ascorel	5a J 110
HBC-radiomatic	Ext 6 D 030
Ikusi	5a K 105
Imet	5a H 106
Scanreco	5a K 094
Tele Radio	5a H 113
TTControl	5a K 115
<b>Overload &amp; Anti-collision devices - Contrôleurs de charge/Anti collision</b>	
3B6	5a J 064
AGS	Ext 5 F 020
AMCS	Ext 6 D 064
Annecy Electronique	5a J 106
Ascorel	5a J 110
Cobo	5a J 064
Hirschmann	5a G 106
Loadrite	5a J 089
LSI-Robway	Ext 6 G 039
Moba	Ext 5a J 010
PAT Kruger	5a G 106
Rayco Wylie	5a J 104
Robway	Ext 6 G 039
Smie	Ext 6 A 011
Trimble	5a L 077
<b>Tyres - Pneus</b>	
Alliance Tire	5a F 051
BKT Tires	5a D 064
Bridgestone	6 G 079
Camoplast Solideal	5a E 013
Goodyear Dunlop	5a F 001
Magna Tyres	5a D 013
Michelin	6 F 032
<b>Engines - Moteurs</b>	
Cummins	5b L 028
Deutz	5b L 016
Hatz-Diesel	5b L 001
Isuzu	5b D 002
Iveco	6 J 116

STAND	
Kohler	5b M 001
Kubota	5a B 073
Mercedes	5a E 107
MTU	5b K 027
FPT Industrial	5b L 041
Scania	6 J 113
Yanmar	5b L 027
<b>Wire rope - Cable</b>	
Casar	5a J 054
Wireco	5a J 054
<b>Components - Composants</b>	
Akerstroms	5a K 099
Amber Valley	6 G 019B
Annecy Electronique	5a J 106
Boscaro	7 L 032
Dana	5a K 064
Dezhou Yuli Hydraulic	5a B 027
Fayat	5a D 137
FTA - Fluides Techniques	5a D 002
G.A. Ricambi	6 H 143
Gates Rubber	5a J 006
GF Gordini	5a H 130
Global Track Warehouse	5a E 001
IMM Hydraulics	5a D 002
JCB Drivetrain	5b J 042
Jiangsu Topower Wheel	5a G 042
Junjin	5a E 075
KAB Seating	5a H 063
Kamag	Ext 6 C 029
KMK Rubber	5a G 127
Manuli Fluiconnecto	5a F 014
Marini	5a D 137
NBP Bearing	5a B 034
Neumeister Hydraulik	5a F 040
Ningbo Bolev Hydraulics	5a C 027
OTR Wheel Engineering	5a D 041B
Panolin	5a H 008
Pilot Seating	5a E 037
Poclain Hydraulics	5a F 026
RB componentes	5a J 071
RDS Technology	5a F 044
Roquet Hydraulics	5a G 025
Shandong Tengong Bearing	5a C 027B
Shanghai Huaxiang Rubber Track	5a G 038
SSAB	5a D 073
T.M.A. Winches	5a H 015
Tata	5a J 094
Thyssenkrupp	Ext 5 E 016
Trelleborg	5a B 064
TVH	5a K 086
Tyri Lights	5a G 064
Vis Hydraulics	5a C 048
Zhejiang Hongyuan Wheel	5a H 150
Zhejiang Yuan Chuang Rubber Track	5a G 034
Zhenjiang Hydraulics	5a C 025

STAND	
<b>Associations</b>	
AEM	5a J 062
CLA	6 G 020
DLR	6 C 001
IPAF	Ext 5 G 005
Unacea	6 B 025
<b>Rental Companies - Sociétés de Location</b>	
Comilev	Ext 5 C 022
Loxam	5a J 074
<b>Electronics</b>	
Akerstroms	5a K 099
AMCS	Ext 6 D 064
Annecy Electronique	5a J 106
Ascorel	5a J 110
Cobo	5a J 064
Curtiss-Wright	5a G 059
Curtiss-Wright	5a G 059
Hirschmann	5a G 106
Loadrite	5a J 089
MethodCad	7 L 097
Moba	Ext 5a J 010
Orlaco	6 B 021
RDS Technology	5a F 044
<b>Others - Les Autres</b>	
bauma	6 B 015
Bices 2015	6 D 013
Big Astor	5a K 071
Cranes & Access	Ext 5 L 004
Ground Guards	6 H 020
Groupe Cayola	Ext 6 A 007
KHL	6 D 002
Kran & Bühne	Ext 5 L 004
Le Journal Du Levage	6 C 015
Le Moniteur	6 C 012
Lectura	6 D 016
Morooka	5a D 009
Off-highway Reseach	6 G 020
Panolin	5a H 008
Ritchie Bros.	6 C 037
RUD	7 J 120
Samoter 2017	6 B 025
SDMO Industries	5b J 028
Société Générale Equipment Finance	5a L 035
SSAB	5a D 073
SwissTIP	5a G 108
T.M.A. Winches	5a H 015
Tata	5a J 094
Tenstar Simulators	5a G 086
Thyssenkrupp	Ext 5 E 016
Trelleborg	5a B 064
TVH	5a K 086
Van der Vlist	5a C 115
Vertikal Press	Ext 5 L 004



# DIESEL-LIKE PERFORMANCE. HYBRID VERSATILITY.



⊕ DIRECT ELECTRIC DRIVE

⊕ EXCEPTIONAL GRADEABILITY

⊕ MANOEUVRES IN ROUGH TERRAIN

⊖ REDUCED

⊖ FUEL USE

⊖ NOISE

⊖ MAINTENANCE

## WORKS ANYWHERE. SAVES EVERYWHERE.

Just as effective indoors or out, the new H340AJ boom lift brings together diesel-strength performance with the benefits of hybrid efficiency, leading to optimum utilisation rates. Equipped with four independent electric-drive motors, it offers unprecedented rough terrain performance as well as a diesel-powered generator for recharging.

Watch it in action at [www.jlg.com/en-gb/hybrids](http://www.jlg.com/en-gb/hybrids)



**JLG**  
reachingout®